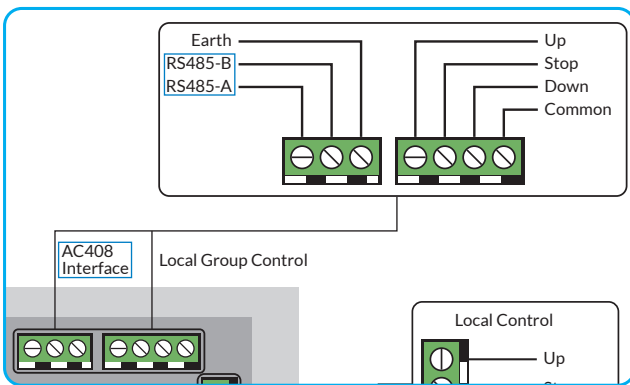


SETTING UP RS485 BASE ID'S AND CHANNELS ON 4 CHANNEL MOTOR CONTROLLER WITH BUILT IN RADIO RECEIVER – 807410000

You will need:

- USB to RS485 converter, such as DigiTech XC4132
- 2 Core Cable from USB to RS485 converter to Motor Controller
- 232 Analyzer software, available free on the Net
- A-OK Motor Control Software Suite, Available from Blindware



Connection

1. Firstly, connect the USB Converter to the Main Board of a Motolux 4ch Motor Controller via the Two Core cable.
2. Connect Data + (on USB converter) to Data A (on the controller)
3. Connect Data – (on USB converter) to Data B (on the controller)
4. Plug in the 240v feed to the Main Board of the 4ch Controller and switch on at the wall.

Next Plug the Usb into a PC and Make Sure All Drivers Are Up to Date

Set Up:

After the connection has been made between the Motor Controller and the PC you will need to open a Com Port using the 232 Analyser, please set your parameters across the tool bar to:

Baud = 2400 Data = 8 bits Parity = None Stop Bits = 1

Now go across to the drop down marked as Comms and open the port once this is done test the port by clicking on the “Play” icon. All data packets should be green, you can now close the 232 Analyzer program.

Setting up the A-OK Motor Control Software:

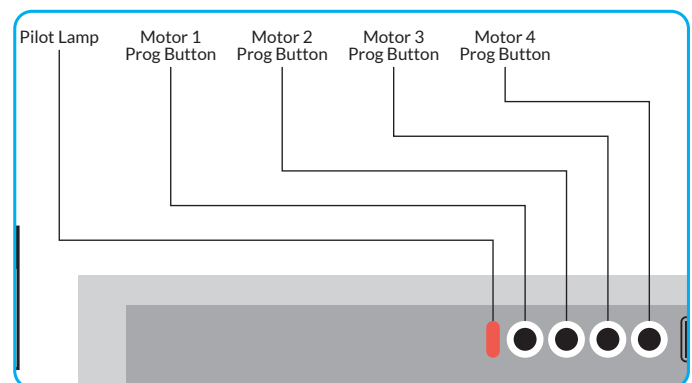
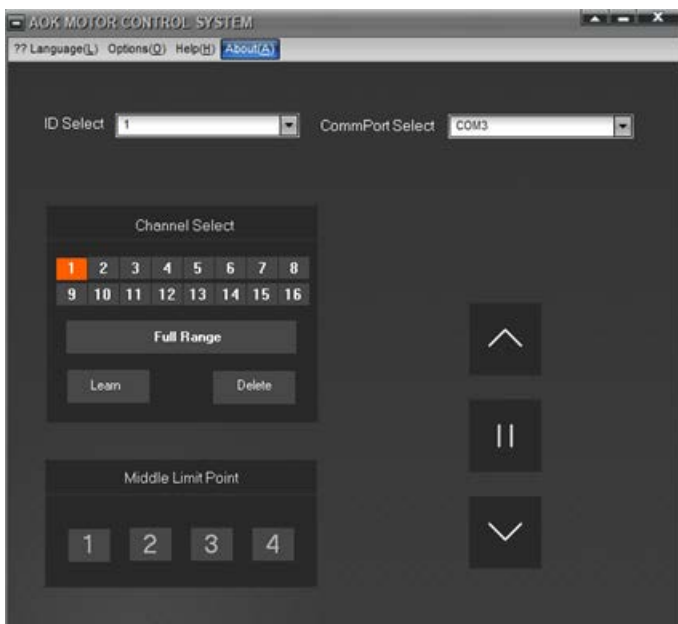
1. Once the 232 Analyzer has been closed you can now open the A-OK Motor Control program.
2. In the Language Tab: Select English
3. Move across to the Comm port Select and open the drop down and select the Comm Port that you just opened.

SETTING UP RS485 BASE ID'S AND CHANNELS ON 4 CHANNEL MOTOR CONTROLLER WITH BUILT IN RADIO RECEIVER – 807410000

Setting Base ID and Channel Number:

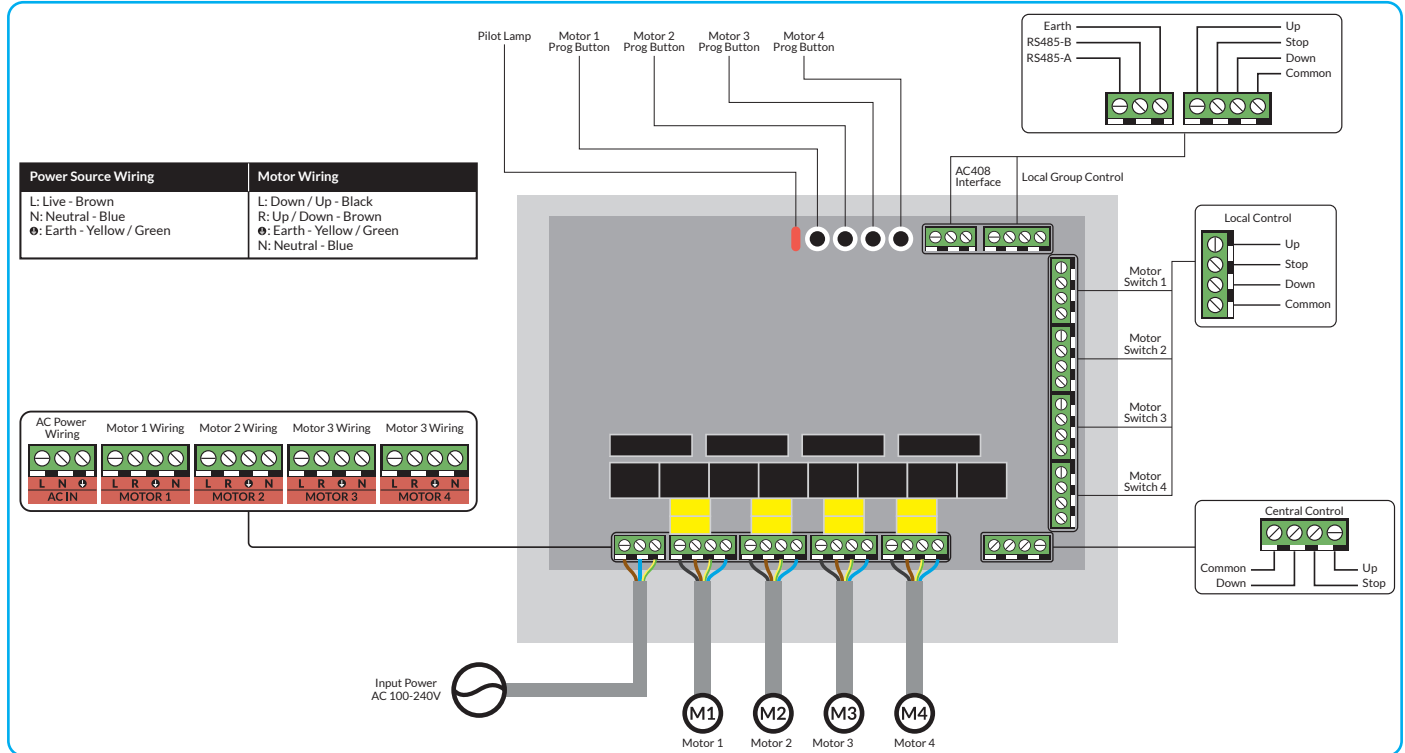
You will be working off the main Screen of the A-OK software and the Motor Controller.

1. In the ID Select field using the drop-down option, please select 1; this sets the Base ID of the unit.
*When using multiple Motor Controllers this number will change according to the number of Controller you intend to use, e.g. If you are using 3 Motor Controllers, then you will set the Base ID on each controller to a different number starting at 1 for the first and up to 2 and then 3.
2. In the Channel Select field, please select and highlight the square with the number 1.
3. On the main circuit board of the Motor Controller, you will need to Push and Hold the button that relates to Channel 1 until the Red light starts to flash.
4. Within 10 seconds, you now need to click on the “Learn Button” in the Channel Select field in the A-OK software. You will now notice that the Red Light on the Main Circuit Board of the Motor Controller will flash 3 times quickly and then go out indicating that the setting of the channel has been successful.
5. For each of the remaining channels you will need to select the corresponding number within the Channel Select field e.g. To set channel 2 you will only have the Number 2 selected and highlighted. Do Not have two numbers selected at the same time as the process will not work.
6. Now test the Motor Controller by selecting the Base Id and Channel number you would like to control, using the Up-Stop-Down icons on the screen you should have full control of each motor.



SETTING UP RS485 BASE ID'S AND CHANNELS ON 4 CHANNEL MOTOR CONTROLLER WITH BUILT IN RADIO RECEIVER - 807410000

Overview of Main Circuit Board



Motolux is a world-class manufacturer of motorisation products and systems dedicated to window covering markets worldwide. A designer and manufacturer of a fully integrated range of motorisation solutions, Motolux products are suitable for commercial or residential use. Our high quality product range is streamlined to simplify the process of manufacturing, installation and ongoing maintenance of almost any type of motorised window covering product.

REVISION 2 - 2021

MOTOLUX

Ordering Information
Australia / New Zealand

61 (0)3 9876 0400

sales@motolux.com.au

www.motolux.com.au